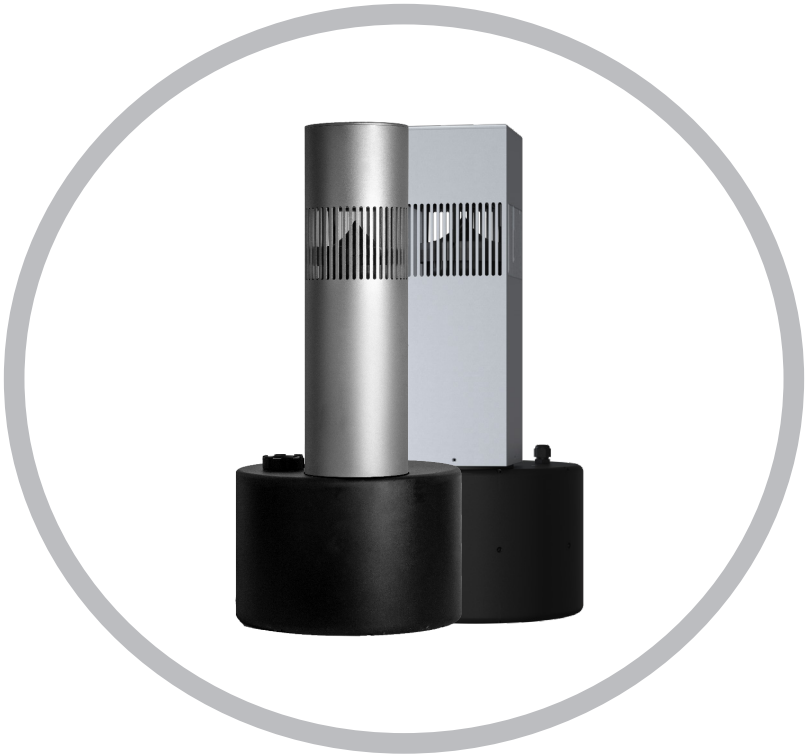




# Seasons Landscape Collection™ Bollard



Installation Manual  
LSB64

## Table of Contents

Introduction -----	1
Models & Specifications -----	2
Items Included -----	2
System Layout -----	3
Installation -----	3
Wiring Options -----	4
Painting -----	6
Troubleshooting -----	6
Technical Assistance -----	7
Warranty -----	8
Return Process -----	9



## **INTRODUCTION**

Congratulations on selecting one of the finest outdoor speaker systems ever produced. The Origin Acoustics Bollard is a single unit that houses both a subwoofer and a mid/high frequency satellite in the same enclosure. The speaker is designed to allow the subwoofer section to be buried in the ground leaving only the pillar section exposed. The sound from both the sub and satellite emanate from the slots in the upper portion of the pillar section creating a uniform, full frequency sonic experience.

At Origin Acoustics, we take pride in providing you with a high quality product. All of Origin Acoustics' speakers are designed to have excellent sound quality, longevity, and a simple installation process.

This instruction booklet covers the necessary information for a smooth installation, including: the tools you will need, step-by-step instructions for installation, troubleshooting tips for any errors that may occur, and all warranty information.

If for any reason you experience problems or if you have installation questions please call us at (844) 674-4461. Hours of operation are 8:00am to 5:00pm (PacificTime), Monday through Friday.

# Models & Specifications

MODEL	LSB64
Woofer	6 ½" Poly Woofer
Midrange	4 ½" Aluminum
Tweeter	1" PEI
Frequency Response	48HZ - 20KHZ
Subwoofer Diameter	12 ½" (315mm)
SAT Diameter	5 ½" (140mm)
Power RMS	60W
Power Peak	100W
Impedance	6 Ohm (Sub) / 4 Ohm (Sat)
Transformer Taps	70V-50W/25W
Mounting Depth	8 ½" (212mm)

### Available In:

- Round or Square Shell
- 360° or 180° Sound Dispersion

Bollard SKU	Shell Shape	Shell Color	Sound Dispersion
LSB64RDS360K	Round ●	Silver	360°
LSB64RDS180K	Round ●	Silver	180°
LSB64RDBL360K	Round ●	Black	360°
LSB64RDBL180K	Round ●	Black	180°
LSB64RDBR360K	Round ●	Bronze	360°
LSB64RDBR180K	Round ●	Bronze	180°
LSB64SQS360K	Square ■	Silver	360°
LSB64SQS180K	Square ■	Silver	180°
LSB64SQBL360K	Square ■	Black	360°
LSB64SQBL180K	Square ■	Black	180°
LSB64SQBR360K	Square ■	Bronze	360°
LSB64SQBR180K	Square ■	Bronze	180°

**\*All product specifications are subject to change. Please refer to the dealer portal for the latest information.**

## Items Included



Speaker



Wire Nuts (4)



Installation Manual

## System Layout

Placement of the speakers throughout the home's exterior will depend on a couple of factors. The first is how uniform of a sound field is required. The laws of physics dictate that the further the listener is from the sound source the lower the apparent sound pressure level or "volume." Because of this there will always be areas with less sound and others with more. A greater number of speakers in the system will always make for more even coverage. The second factor is the desired maximum sound pressure required. Some systems are designed for background or ambient music only, while others are designed to rock the house or provide dance music. Again, the number of speakers will affect the maximum output. Consider creating different zones where louder music is required in one area and softer music in others.

The Bollard also has two dispersion options. One is omnidirectional allowing sound to be projected 360 degrees from the enclosure. The second is accomplished with an insert to limit the sound to half if the dispersion or 180 degrees from the enclosure. This is perfect for border areas where you are concerned about unwanted sound spilling into a neighbor's yard or an area where the music is simply unwanted. The Bollard must be ordered in one of the two configurations as the insert must be installed at the factory. Changing the insert in the field is not an option as doing so would likely damage the unit.

If you are concerned about determining speaker placement, Origin Acoustics offers a free design service to help you map the optimal speaker placements as well as recommended amplifier power and project scale. (Email [customerservice@originacoustics.com](mailto:customerservice@originacoustics.com) for more information.)

## Installation

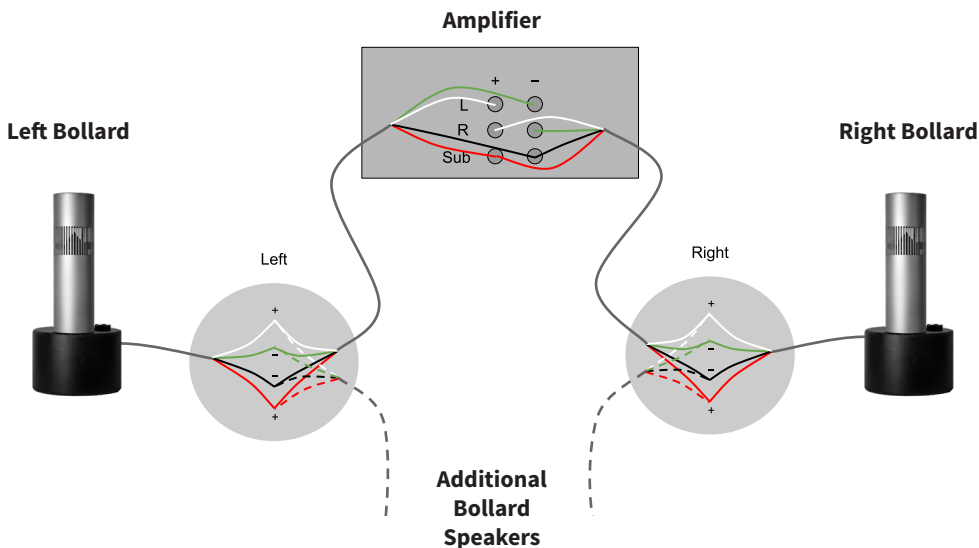
Once coverage and sound pressure requirements have been determined the Bollard locations can be selected. Before digging, confirm there are no subterranean obstructions such as water or gas lines, sprinkler pipes or electrical conduits. Holes for the subs should be deep enough to cover the entire lower section of the enclosure with approximately 1-inch of dirt on top of the that section. This will allow the pillar (shell) to protrude about 18-inches above the surface.

**NOTE: DO NOT BURY THE ENCLOSURE UNTIL ALL WIRING HAS BEEN COMPLETED.** All Subwoofer portion of Bollards will be on a designated wire run and all Satellite portion of Bollards on a separate wire run. The DSP3-700 amplifier from Origin Acoustics was specifically designed to drive Origin’s outdoor speaker systems. It is not required, and you can select the amplifier of your choice, but the DSP3-700 offers EQ and crossover presets specifically for the Bollard. These presets have active crossovers that remove the bass from the satellites and send that bass only to the subwoofers. This more effectively controls how the subwoofer interfaces with the satellites and permits you to control the subwoofer-to-satellite balance. The digital signal processing or “DSP” also shapes the sound for both subs and satellites to create optimum performance.

## Wiring Options

In a 70V installation the subwoofers and satellites will be run in parallel. We recommend using our DSP3-700 3ch amplifier with DSP for this use case and connecting all wires of the same channel back to the amplifier in parallel. (See the wiring diagram below) Keep in mind that each bollard speaker has a separate Satellite and a Subwoofer speaker that need to be wired directly to separate amplifier channels. There is a 4 conductor wire coming from each bollard. (Green/White for Satellites, Red/Black for Subwoofers) For 70V systems you can run up to 12 bollards wired in parallel on one DSP3-700 amplifier in the 50W tap setting. (6 Sats per channel and all 12 subwoofers run to the SUB channel) If you want to run the bollards in 8 Ohms, you wire the same way (L/R/SUB in parallel) but only 2 bollards per DSP3-700 amplifier maximum.

### WIRING DIAGRAM



Also consider whether you will be running the satellites in mono or stereo. In many applications the listener will never be equidistant from a left and right speaker, so mono may be the best option. Regardless, the DSP3-700 offers three independent channels so either option is viable. Remember, if you will be running in stereo you will need to run four wires to each speaker, (+) and (-) for left or right, and sub.

To change the power tap setting, use the tap switch under the cap on the subwoofer.



Each pair of wires connecting into the subwoofer and satellite portions of Bollard speaker is labeled as SUB IN and SAT IN respectively.

**Sub IN** red +  
black-

**Sat IN** white +  
green -

We recommend following for the max number of Bollards that can be run.

BOLLARD TAP SWITCH SETTING	AMPLIFIER RECOMMENDED*	NUMBER OF BOLLARD SPEAKERS MAX #
8 Ohm (bypass)	DSP3-100	Total 2 per DSP3-100 Amp*
25W (70V)	DSP3-700	Total 12 per DSP3-700 Amp (12/Channel)
50W (70V)	DSP3-700	Total 12 per DSP3-700 Amp (6/Channel)

**\* Warning: Run maximum 2 (two) Bollard speakers ONLY per Amplifier if used in 8 Ohm Tap switch setting.\***

We recommend our DSP3-100 Amp for 8 Ohm, and DSP3-700 Amp for 70V for Sub control and DSP for best performance.

In the Ohm ( $\Omega$ ) tap switch position, the transformers are bypassed. Due to the impedance in the 6  $\Omega$  (Sub) / 4  $\Omega$  (Sat) setting, only a single pair of Bollards can be used. If you are looking to use more than two Bollard speakers, 70V is the proper solution.

## Painting

The shell (pillar) of the Bollard outdoor speaker is anodized specifically for achieving maximum durability of the pillar color. If you wish to change the color of the Bollard shell by painting or other process, it may compromise the durability and finish of the product compared to the original manufacturing process and modify the specifications.



## Troubleshooting

If you have a problem, try isolating it first. For example, if you're playing a DVD and there is no sound, try replacing the DVD with an MP3 player to see if you get sound. If it does work, then the problem is with the television, DVD player, or the cables connecting them. If it doesn't work, the problem will be with the amplifier, speakers, or those cables.

<b>Problem</b>	<b>Possible Cause</b>
No Sound	The volume may be turned down or muted. Check the volume settings on both the amplifier and the DVD player/television/computer/etc.
No Sound	Make sure the proper source is selected on the amplifier or receiver.
No Sound	Check the cord connecting the amplifier with the source. The cord may be damaged or plugged into the wrong input or output.
No Sound	Check the wires connecting the amplifier with the speakers. Make sure they're connected properly and not damaged in any way.
Poor Sound Quality	If you hear something like static, or the sound is cutting in and out, check the audio cables. If the problem increases when a cable is being moved, then the cable is most likely faulty or not connected properly.
Poor Sound Quality	Today's audio systems may have several places to adjust the volume, for example your MP3 player may have a volume control, and your amplifier may also have one. Check to be certain that the volume isn't turned up past 80% on any device.
Poor Sound Quality	Try changing sources to be certain that the selection you've chosen is a good quality recording.



## Technical Assistance

If you have any questions or concerns about installing or using this product, you can reach us through one of the following methods:

Phone: (844) 674-4461

Hours of operation: 8:00am - 5:00pm (Pacific Time), Mon - Fri

Email: [techsupport@originacoustics.com](mailto:techsupport@originacoustics.com)

If you are having technical trouble, please include the model number and briefly explain what steps you took to resolve the problem in your email, or be prepared to answer these questions over the phone. If you are considering returning the product, it's required that you contact Origin Acoustics prior to any return attempts. This way we can determine if the issue can be resolved without returning the product, or if needed we can provide instructions and support for the return process.

## Limited 5 Year Warranty

Origin Acoustics warrants to the original retail purchaser only that this Origin Acoustics product will be free from defects in materials and workmanship, provided the speaker was purchased from an Origin Acoustics authorized dealer.

If the product is determined to be defective, it will be repaired or replaced at Origin Acoustics' discretion. If the product must be replaced yet it is no longer manufactured, it will be replaced with a model of equal to or greater value that is the most similar to the original. If this is the case, installing the replacement model may require mounting modifications; Origin Acoustics will not be responsible for any such related costs.

## Requirements & Warranty Coverage

This warranty may not be valid if the product was purchased through an unauthorized dealer. This warranty only applies to the individual that made the original purchase, and it cannot be applied to other purchases. The purchaser must be prepared to provide proof of purchase (receipt). This warranty will not be valid if the identifying number or serial number has been removed, defaced, or altered.

**\*All warranties and warranty conditions are subject to change. Please refer to  
[www.originacoustics.com](http://www.originacoustics.com) for the latest information.**

## Not Covered by Warranty

- Accidental damage
- Damage caused by abuse or misuse
- Damage caused by attempted repairs/modifications by anyone other than Origin Acoustics or an authorized dealer
- Damage caused by improper installation
- Normal wear, maintenance, and environmental issues
- Damage caused by voltage inputs in excess of the rated maximum of the unit
- Damage inflicted during the return shipment

## Return Process

Before making any return attempts, it is required that you first contact Origin Acoustics. Return product to Origin Acoustics or your dealer, either in person or by mail. It's preferable if the product is returned in the original packaging. If this isn't possible, the customer is responsible for insuring the shipment for the full value of the product.

This warranty is in lieu of all other expressed or implied warranties. Some states do not allow limitations on implied warranties, so this may not apply depending on the customer's location. (For more information, see Magnuson-Moss Warranty Act.)



6975 S Decatur BLVD, Las Vegas, NV 89118 • [www.originacoustics.com](http://www.originacoustics.com) • 844-674-4461

©2018 Origin Acoustics. All copyrighted, trademarked and patented elements mentioned herein are the sole property of Origin Acoustics.